

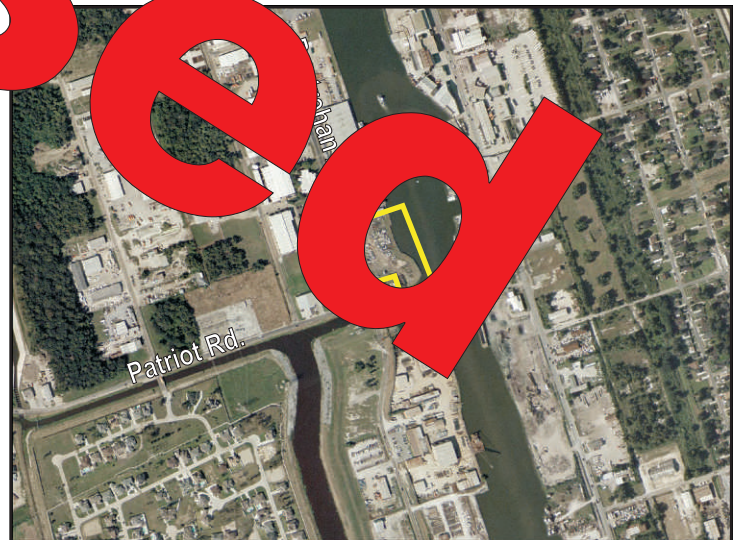
# FOR LEASE

## Lot H-1A fronting Destrehan Avenue, Harvey, LA Westbank Industrial Waterfront Development Opportunity



- Size: 3 acres of well stabilized land
- Harvey Canal frontage: 490' with bulkhead
- Access to the Mississippi River and Intracoastal Waterway
- Excellent access: Fronts major north/south road-one mile to Hwy. 90
- Street frontage: 400' on Destrehan Ave.
- Zoned: M-3 Heavy Industrial
- \$5,500 per month

This tract of land features 490' frontage along the Harvey Canal. The 3 acre site is bulkheaded, clear, and compacted, with 400' frontage along Destrehan Ave. Destrehan Ave. is being upgraded to a four lane thoroughfare and which will offer quick access to Westbank Expressway. The site adjoins the Stewart Stevenson facility and is only one mile from the Mississippi River.



## NAI Latter & Blum

Commercial Real Estate Services, Worldwide.

NAI/Latter & Blum, Inc./Realtors®  
430 Notre Dame Street  
New Orleans, LA 70130-3610  
[www.latterblum.com](http://www.latterblum.com)

For more information, please contact:

**James Barse, CCIM, SIOR**  
NAI/Latter & Blum, Inc.  
Commercial Real Estate Broker  
3836 Spencer Street  
Harvey, LA 70058  
Office: (504) 340-9339  
Fax: (504) 347-0898  
E-mail: [jbarse@latterblum.com](mailto:jbarse@latterblum.com)

The information contained herein has either been given to us by the owner of the property or obtained from sources that we deem reliable. No warranties or representations, expressed or implied are made as to the accuracy of the information contained herein, and same is submitted subject to errors, omissions, change of price, rental or other conditions, withdrawal without notice, and to any special listing conditions imposed by our principals.