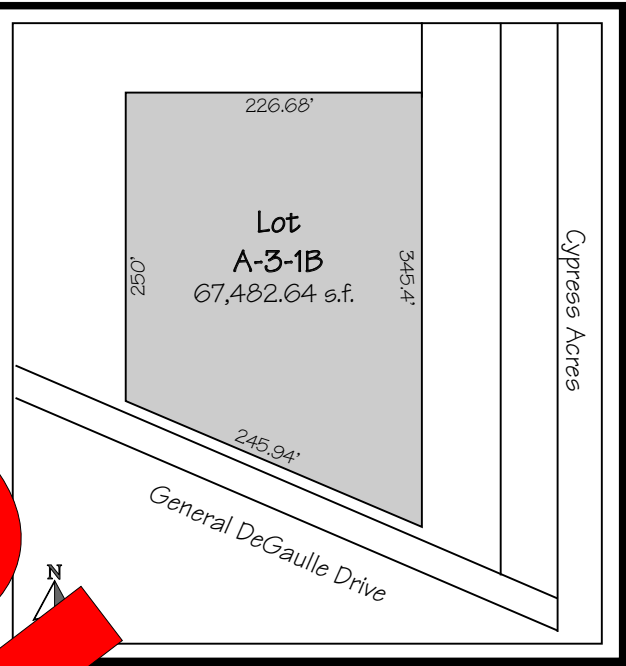


FOR SALE

GENERAL DEGAULLE CORNER LOCATION



SOLED

This 1 1/2 acre parcel offers tremendous exposure to General DeGaulle Dr., a 3 lane, and a major Westbank arterial. Downtown New Orleans and I-10 are only a few minutes away. General DeGaulle offers a wide medium between its North and South routes.

The lot has been filled and partially cleared. The owner will consider a sale, lease or a build-to-suit at very competitive rates.

Size: 67,482 SqFt

Frontage: 245' on General DeGaulle Drive
345' on Cypress Acres

Zoning: B-2

For further information, please contact:

James Barse, CCIM

(504) 340-9339

jbarse@latterblum.com



COMMERCIAL REAL ESTATE SERVICES, WORLDWIDE

www.latterblum.com

800 Common Street • Suite 1000 • New Orleans • Louisiana • 70112 - 2338