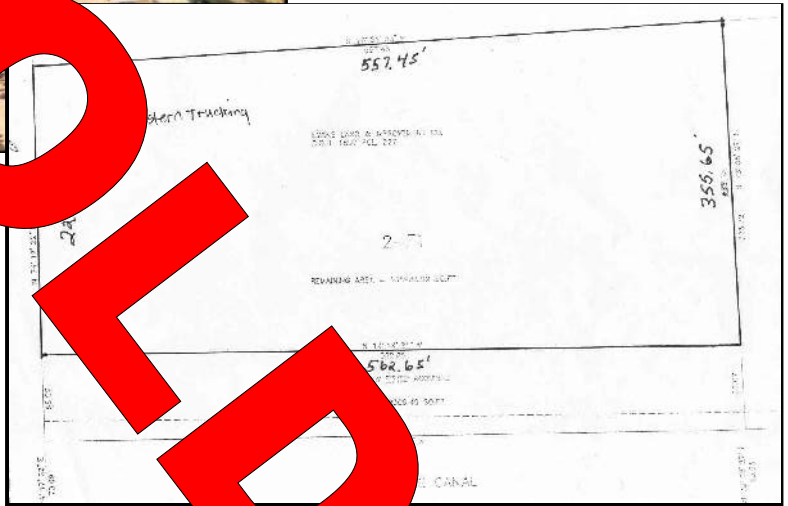


FOR SALE

WESTBANK INDUSTRIAL LAND



2775 Breaux Ave.,
Harvey, LA



- Large 3.2-acre lot
- Zoned M-3
- Frontage 229'
- Conveniently located near Peters Rd. & Lapalco Blvd.
- Excellent for painting, blasting, storage, or welding
- Heavy duty shell-filled yard

For further information, please contact:

James Barse, CCIM, SIOR

(504) 340-9339

jbarse@latterblum.com



COMMERCIAL REAL ESTATE SERVICES, WORLDWIDE

www.latterblum.com

800 Common Street • Suite 1000 • New Orleans • Louisiana • 70112 - 2338