

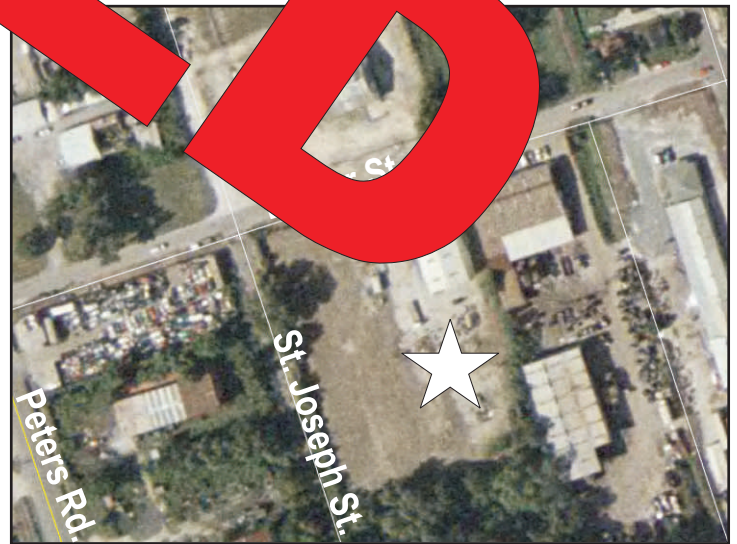
FOR SALE/LEASE

2576 Lester Street, Harvey, LA
Harvey Warehouse/Office



- Building area: 5,000 SqFt
- Office area: 2,500 Sq. Ft. includes 1,250 Sq. Ft. of mezzanine
- Warehouse area: 3,750 SqFt
- Eave height: 19'
- Lot Size: 80,000 SqFt
- Zoned: M2, Heavy Industrial

Located one block off Peters Road, this attractive office/warehouse offers a 19' eave height for plenty of stacking and storage capabilities. It also includes two acres of storage yard.



NAI Latter & Blum

Commercial Real Estate Services, Worldwide.

NAI/Latter & Blum, Inc./Realtors®
430 Notre Dame Street
New Orleans, LA 70130-3610
www.latterblum.com

For more information, please contact:

James Barse, CCIM, SIOR
NAI/Latter & Blum, Inc.
Commercial Real Estate Broker
3836 Spencer Street
Harvey, LA 70058
Office: (504) 340-9339
Fax: (504) 347-0898
E-mail: jbarse@latterblum.com

The information contained herein has either been given to us by the owner of the property or obtained from sources that we deem reliable. No warranties or representations, expressed or implied are made as to the accuracy of the information contained herein, and same is submitted subject to errors, omissions, change of price, rental or other conditions, withdrawal without notice, and to any special listing conditions imposed by our principals.