

# FOR SALE

## OFFICE/WAREHOUSE IN HARVEY



1900 Industrial Blvd.  
Harvey, LA

- Building total area: 16,700 sqft
- Office area: 1,900 sqft
- Warehouse area: 13,825 sqft
- A.C. Shop, parts, and kitchen: 925 sqft
- 2 bridge cranes (3 & 5 ton)
- Can be multi-tenanted
- Lot size: 125' x 200'
- Zoning: M-1
- Six (6) overhead doors
- Lighting: skylights and mercury vapor lights
- Excellent condition



For further information, please contact:  
**James Barse, CCIM, SIOR**  
**(504) 340-9339**  
jbarse@latterblum.com



COMMERCIAL REAL ESTATE SERVICES, WORLDWIDE

800 Common Street • Suite 1000 • New Orleans • Louisiana • 70112 - 2338

[www.latterblum.com](http://www.latterblum.com)

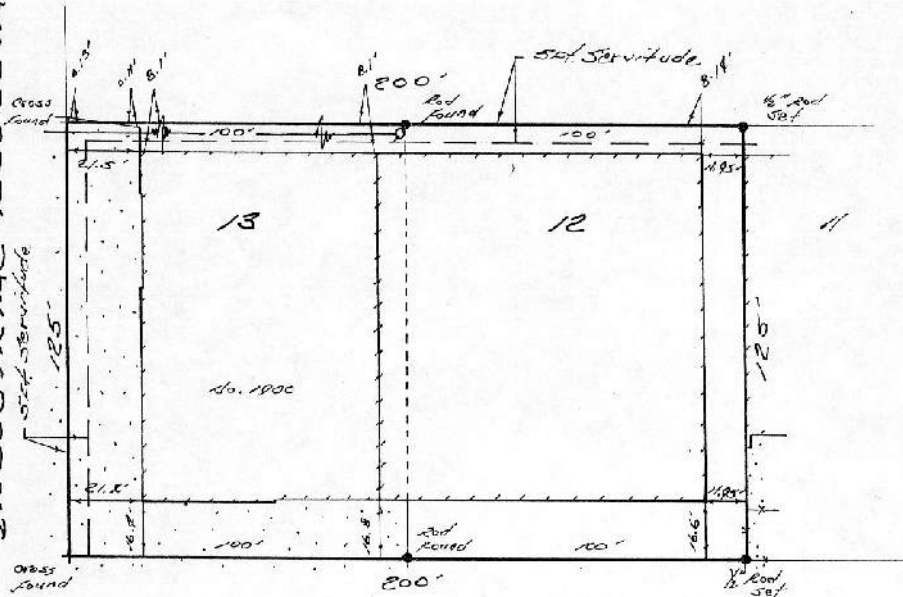
SQUARE 1  
 LAPALCO INDUSTRIAL PARK  
 JEFFERSON PARISH, LOUISIANA



LAPALCO BOULEVARD (SIDE)

INDUSTRIAL BOULEVARD

WEST LINE OF INDUSTRIAL PARK (SIDE)



VONNIE DRIVE

Revised to show the improvements Sept. 8, 1993.

*[Signature]*

THE SERVITUDES AND RESTRICTIONS SHOWN ON THIS SURVEY ARE LIMITED TO THOSE SET FORTH IN THE DESCRIPTION FURNISHED US AND THERE IS NO REPRESENTATION THAT ALL APPLICABLE SERVITUDES AND RESTRICTIONS ARE SHOWN HEREON. THE SURVEYOR HAS MADE NO TITLE SEARCH OR PUBLIC RECORD SEARCH IN COMPILING THE DATA FOR THIS SURVEY.

HARVEY, LA.

APRIL 29, 1993

SURVEYED IN ACCORDANCE WITH THE LA. MINIMUM STANDARDS FOR PROPERTY BOUNDARY SURVEYS FOR A CLASS C SURVEY, MADE AT THE REQUEST OF TURBINE SPECIALTIES ACQUISITION CORPORATION.

COMPLIMENTARY COPY

DOES NOT REPRESENT A COPY OF THE CURRENT SURVEY

SCALE: 1" = 40'

DUFRENE SURVEYING & ENGINEERING INC.

*[Signature]*  
 93-0922